

The
Baird Family Hospital
and **The ANCHOR Centre**
Project

GRAHAM

NHS
Grampian

PROJECT NEWSLETTER

ISSUE 22 December 2022

Contents

- Thank you - 1
- Project Update - 2
- Site Progress - 3
- Baird and ANCHOR - Planning for the Future - 6
- Welcome to the Team - 8
- The ANCHOR Centre – A year to go campaign - 9

THANK YOU

By Paul Allen, Senior Responsible Officer, Baird and ANCHOR and Director of Infrastructure & Sustainability



Since my last update in June 2022, both Baird and ANCHOR projects continue to progress at pace and it's fantastic to see these amazing new facilities take shape. We are now within 12 months of opening ANCHOR as per the current project timeline, which is an exciting milestone for us all to look forward to.

Both these new builds are not without many challenges especially through an enduring pandemic, geopolitical issues and overcoming pressures in relation to labour, supply chain and inflationary costs. All this would not be possible without the hard work and dedication that goes into the planning of these facilities by our contractors, the project team, clinicians, our staff and wider stakeholders that will make these complex projects successful.

Finally, I would like to say a personal thank you to all who have been and remain closely involved in the planning and construction of our new Baird and ANCHOR facilities and I look forward to continuing to work closely with you all as we construct and commission these new buildings.

PROJECT UPDATE

By Jackie Bremner, Project Director



Welcome to the December 2022 newsletter. Construction work on both developments continues to make good progress with the external works nearing completion and the focus turning to the internal fit out over the coming months at The ANCHOR Centre. At The Baird Family Hospital the concrete works are now complete, the fixed tower cranes have gone from the skyline and, the window installation, cladding and internal partitioning work is now well underway with the mechanical and electrical installation started.

The construction programme continues to make good progress despite the well-rehearsed challenges covered in previous

editions of this newsletter. These national and global issues continue to create challenge in terms of both programme and cost and are kept under constant review with our Construction Partner, GRAHAM Construction.

The Baird and ANCHOR Project Team along with clinical and service colleagues from across the organisation, our advisors and construction partner and their supply chain have worked extremely hard throughout the year, and for many well beyond their contracted hours to meet all the challenges presented on a daily basis, to deliver these two major complex health facilities. I can't thank everyone enough and look forward to making great progress with both developments in 2023. This will include bringing The ANCHOR Centre into operation in the autumn of 2023.

Wishing all our readers a very Merry Christmas and a wonderful new year, when it comes.

Please follow our project on Social Media for our latest news and opportunities to get involved – and invite your friends to like our pages too!



@bairdanchor



@bairdANCHOR



@bairdANCHOR

Dedicated project website available at www.bairdanchor.org or email the team at gram.bairdandanchor@nhs.scot

BAIRD AND ANCHOR SITE PROGRESS

Technical Team

Since the last update, good progress continues to be made with construction of both The Baird Family Hospital and The ANCHOR Centre.

On **The Baird Family Hospital** for the first time since the construction works began there is a clear skyline visible now that the final of the four original tower cranes has been removed. As well as being a significant milestone, this is a visual transformation to the way the building appears as it looks less like a construction site.



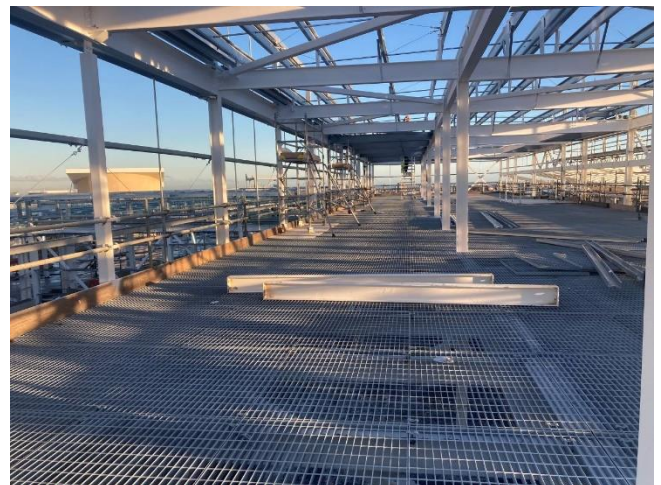
The Baird Family Hospital East Side – curtain walling in progress

The work to form the main concrete structure is now fully complete, leaving only the generator housing and the voids in the building's floor slabs, where the recently removed tower crane was located, to be completed.



The Baird Family Hospital West Side - Preparation for concreting the generator housing

The work to erect the steelwork at the uppermost floor, which generally forms the enclosed rooftop plant rooms, is complete with cladding work ongoing.



The Baird Family Hospital - Rooftop (fourth level) plant room steelwork complete, intumescent paint ongoing.

The inside of the building is also taking shape with some of the main partitions erected which means the curved internal layout is now more visible.



The Baird Family Hospital North Side Internally - External Wall (left) and dry wall partitions on the right on north first floor corridor

The first of the electrical/pipework modules comprising, pipework and cable trays which are fabricated off site then lifted into position on site have recently been delivered marking another significant milestone in the construction programme.



The Baird Family Hospital - Ground floor corridor, pipework module installation ongoing.

The work on the link bridge joining The Baird to Aberdeen Royal Infirmary (ARI) and Royal Aberdeen Children's Hospital (RACH) continues with the roof and window installation now complete and external cladding nearing completion.

Thanks to a combined effort between GRAHAM Construction and the Baird and ANCHOR project team, there will shortly be a sample birthing room completed, which as well as having fabric and finishes will also be fully equipped with clinical equipment, including the birthing pool, fixtures and fittings to demonstrate to the project team and operational staff how the room will look and function spatially. This room will also be used as a benchmark for the likes of floor, wall and ceiling finishes which will be repeated throughout The Baird Family Hospital. This is an exciting development and will reveal for the first time the interior design strategy which until now has only been available to view graphically in a virtual way through the use of 3D modelling software, artists' impressions and sample boards.

The ANCHOR Centre is taking shape fast. The external render and brickwork is complete with the exception of a few small sections of render on the south elevation and the junction between the new building and Radiotherapy building which shall be completed shortly – weather permitting.

To the west of the site, the brickwork clad concrete retaining walls are complete and the landscaping is beginning to take shape.



The ANCHOR Centre – west elevation

Similarly, work to the east retaining wall is very close to completion with only a few courses of brickwork remaining to be built at the section of retaining wall to the right (north) of the main entrance. This progress has enabled the two-way system to be reinstated to the adjacent road. The backfilling to the east, which incidentally equates to approximately 1500 cubic metres of fill material, is progressing well. This area will be for patient parking.



The ANCHOR Centre – east elevation looking from south

The works to enable the breakthrough from The ANCHOR Centre into the existing Radiotherapy Department is progressing well and the Radiotherapy staffroom, which was reduced in size to allow for alteration works, has now been reinstated – a big thank you goes out to all the staff for putting up with the inconvenience.

Internally, the installation of 1st and 2nd fix MEP (mechanical / electrical / plumbing) is continuing on the ground and first floors and final fix MEP progressing on the lower ground floor.

Temporary heating has been installed to maintain satisfactory temperatures within the building envelope to allow the installation of floor coverings, doors, cabinetry and joinery ahead of the ceiling mounted radiant panels which will be fed

from the ARI Energy Centre Vital Energy district heating system which is in the process of being installed.

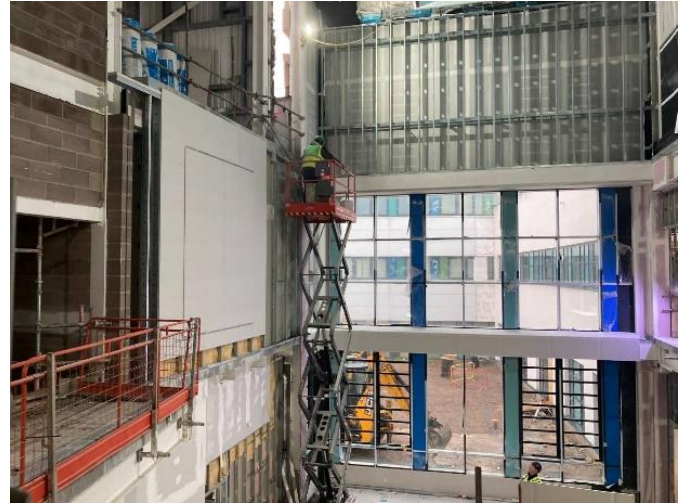
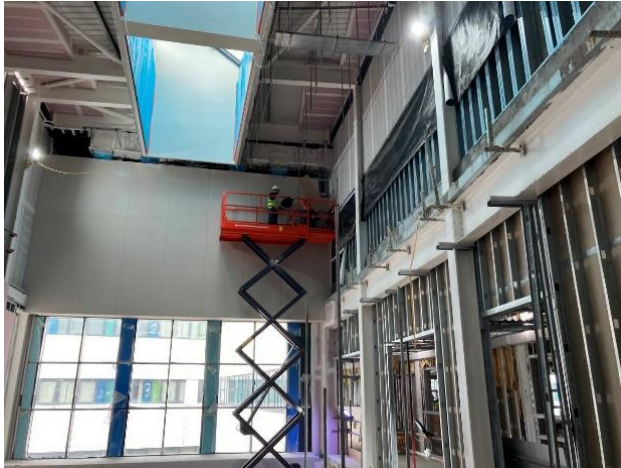
The fit out work has been sequenced so all works / trades start from the lower ground floor and progress upwards, for example when the floor screed is completed on the lower ground the floor screeders (floor layers) will move up to the ground floor allowing the follow on trades like door installation, ceilings and wall protection to start on the lower ground and so on. On ANCHOR the floor screed is well under way and is now on the first floor which is the final floor in the sequence.

The internal door installation is complete on the lower ground floor, which will allow the floor coverings to commence alongside the installation of cabinetry, fixtures, fittings, paint work and final fix MEP. This is the stage in the process when the site becomes really busy with a lot of trades in the same areas and the interior will change in appearance very rapidly.

Suspended ceilings, wall protection and IPS assemblies are in the process of being installed on the lower ground floor. IPS or integrated plumbing system assemblies are prefabricated joinery fixtures which are designed to conceal the water and drainage pipework behind toilets, wash hand basins, showers and sinks etc., in essence creating a new wall with a durable easy to clean surface which can be easily accessed for servicing and maintenance which creates a more attractive finish.



Finally another look at the progress of the feature stairs / atrium which has progressed considerably from the previous newsletter as can be seen in these photos.



BAIRD AND ANCHOR – PLANNING FOR THE FUTURE

By Stuart Humphreys, Director of Marketing and Corporate Communications

To make sure the NHS can keep helping us all in the future we need to transform how and where we deliver care. This will involve overcoming challenges including an ageing population and changing patterns of illness, introducing new technology (which can be expensive) and creating a shared understanding of what the NHS can deliver with communities.

NHS Grampian's Plan for the Future sets out our direction for 2022-2028 and provides a strategic framework for achieving this transformation – with a dual focus on enabling wellness as well as responding to illness.

Whilst conceived well before the launch of our Plan, as major infrastructure projects

that represent a step-change in where and how we deliver care, The Baird Family Hospital and The ANCHOR Centre are central to our future. They represent key aspects of our Plan around People, Places and Pathways – themes that were chosen to help us to focus our collective efforts and help people to understand the journey we are on.

- People:

The Plan for the Future sets out how we intend to develop new conversations and relationships with **PEOPLE**. This is something that has been at the heart of the Baird and ANCHOR development from the outset – with conversations among clinicians and communities informing many aspects of each building's design as well as how people will work and be cared for within them.

- Places:

The Plan also describes our commitment to using **PLACES** to achieve sustainable change for communities by creating environments (both social and physical) that encourage health and wellbeing. The Baird and ANCHOR's unique spaces will offer contemporary accommodation to support person-centred clinical care for patients and families across the North of Scotland. From 100% single en-suite rooms for in-patients and the Patient Hotel for those travelling from remote areas in the Baird, to The ANCHOR Centre's welcoming, sociable spaces that promote wellness and positivity and an Aseptic Pharmacy Suite, allowing quicker access to chemotherapy products and reducing waits.

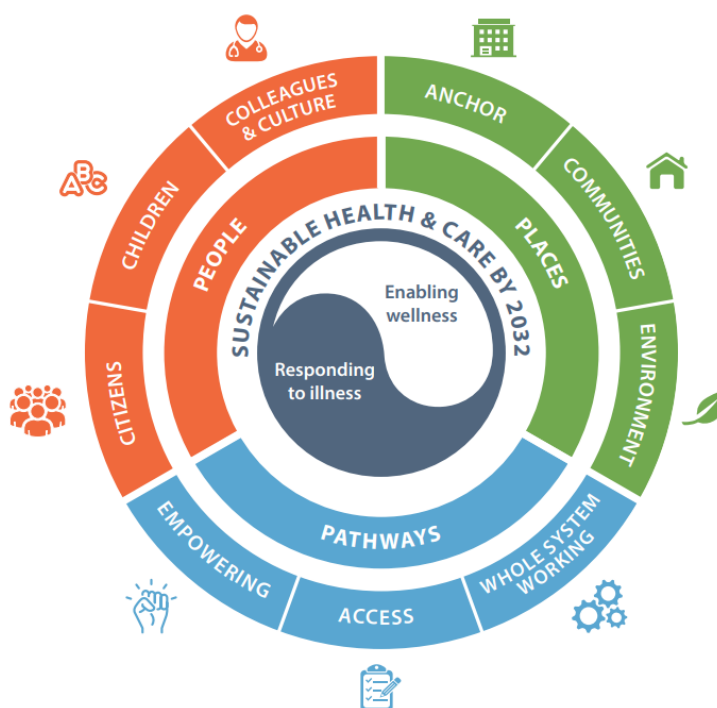
- Pathways:

Also contained in our Plan for the Future is making **PATHWAYS** of health and care easier for people to access in a timely

manner. This ambition is very evident in The Baird Family Hospital, which will bring together all Maternity, Neonatal, Reproductive Medicine, Breast and Gynaecology services. And The ANCHOR Centre brings all Haematology, Oncology and Radiotherapy Day and Outpatient services under one roof, as well as creating dedicated teaching and research facilities.

Planning Ahead

To develop our Plan for the Future we had conversations with the public, our staff and our partners to help us understand what is important to them when it comes to health and wellbeing. As a result, the Plan for the Future is perhaps the best example of what people think modern health and care should look like. It is therefore a great sense of pride that the Baird and ANCHOR project is true to these core principles – and can be considered one of the first significant milestones in our Plan's delivery.



WELCOME TO THE TEAM



Hi, my name is Stuart Douglas and I have joined the Baird and ANCHOR project team as the Assistant Commissioning Manager. I have been working for NHS Grampian since 2014 and have moved to the team from the Maintenance Team where I supported decontamination equipment.

I am originally from Glasgow (don't hold that against me), and really enjoy being able to work for the NHS, given that the services help so many people in a time of need. I am currently studying towards a business degree along-side my work.

My previous experience, skills and expertise centres on supporting maintenance schedules, machine uptime and validations of equipment. I am hoping that this will support the work I will be doing around the commissioning process and in particular the areas around fire, security and civil contingencies that I will be involved in.

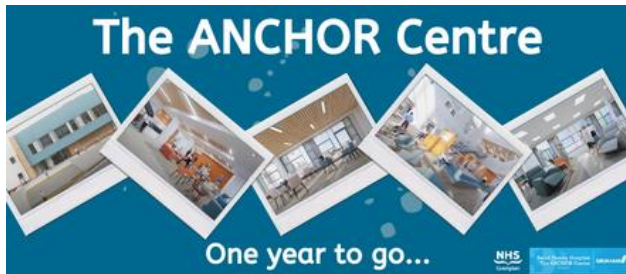
I started in the project team at the start of November 2022 under the stewardship of Louise Budge. It has been a great experience getting to know all of the people working around the project. I have come to appreciate the vast amount of hard work that is going into delivering these fantastic new facilities.

The main focus of my role will be to support working groups around facilities management as well as fire, security and civil contingencies. This is to support the strategy of services being in a position to move into the new facilities as they become ready by ensuring policies, procedures and plans are in place beforehand.

I am looking forward to working alongside all services during this process. Being part of the project team is a pleasure, one I am excited and proud to be a part of being able to help deliver fantastic new facilities that NHS Grampian can be proud of. Facilities that will make the difference in how we can support the patients for many years to come.

THE ANCHOR CENTRE – YEAR TO GO CAMPAIGN

By Lauren Tweedley, Communication and Engagement Lead, Baird and ANCHOR



In September we launched our year to go campaign for The ANCHOR Centre opening. We asked members of the project team and staff who will be based in the new centre to tell us what they are most excited about for The ANCHOR Centre opening. Many staff took part in videos that can be viewed at <https://bit.ly/anchor-centre-one-year-to-go>. And others have written their thoughts.

The overwhelming feeling from the Administrative Team in both the Out Patient Service and Medical Secretarial Service is that they are really looking forward to the move into the new ANCHOR Centre. This will provide more space, a lovely environment and will bring all staff within the team together. With more integration and improved communication between the multi-disciplinary team's it is very much hoped that we provide an even higher level of service to both patients and families alike.
Administrative Team

It is so exciting to be part of this purpose-built facility. Clinical research is core to NHS Grampian and an integral part of patient care. Clinical trials are evolving to find new, faster and more efficient ways to bring opportunities to patients. Having everyone under one roof will undoubtedly improve communication, strengthen relationships, provide additional support and promote team collaboration. But most importantly it will allow us to offer trials too as many patients as possible in a new and welcoming environment.
Shirley Richardson
Senior Research Nurse- Oncology & Haematology

"I am most excited about having all the ANCHOR outpatient services in one specialised location. A specifically designed building that allows staff to work effectively and efficiently with the focus of our patient's needs at the forefront. The building will offer a modern and comfortable environment for patients to come for appointments and treatments with the inclusion of new facilities that will enhance their outpatient experience. The research and training facilities will offer designated space for teams to work collaboratively, continuing to engage in national clinical trials and advance service provision. The building will really bring us together"
Alison Taylor
Unit Support Manager

We are holding monthly drop in sessions where project team members will be available to answer questions and to share latest developments. This month we were able to share interior design images and colour palettes. We will continue to hold these sessions throughout 2023 - dates and venues coming soon.

Thank you again to all staff who took part in the year to go campaign, here's to ANCHOR 2023.