

Contents

Project Update - 1

Site Progress - 2

The WASP - 4

Welcome to the Team - 6

Considerate Constructor - 7

PROJECT UPDATE

By Jackie Bremner, Project Director



Welcome to the May 2021 newsletter. As you will see from the photos later on in the newsletter, construction is now well underway and running to plan. Whilst construction progresses the project team continue to work hard to complete the details of the internal design. This

considerable exercise will continue to be progressed over the next 12 months.

In addition, work is underway to plan for moving into the buildings during 2023. This work includes development of plans for the relocation of services and the equipment that is needed.

Plans are now in place for a **virtual launch event** on Tuesday 18th May. The current COVID-19 restrictions have prevented us from having the more traditional, start on site, launch event. We have instead put together a virtual launch which we hope everyone finds informative and enjoyable.

One of the benefits of a virtual launch is that everyone can participate and can enjoy the launch information when they like and

as often as they like. You will be able to access the launch event on our social media channels and from our website. We very much hope you click on to the event and look at the information provided about the project. This includes for example; a narrated 'fly through' video of each building and patient stories outlining the experiences of three patients, referring to the benefits they believe the new facilities

will bring. In addition, there is information about our construction partners GRAHAM Construction and our fundraising partners, The ARCHIE Foundation, Friends of ANCHOR and the University of Aberdeen Development Trust.

Please look out for the event from 18th May 2021.

Please follow our project on Social Media for our latest news and opportunities to get involved – and invite your friends to like our pages too!



@bairdanchor



@bairdANCHOR



@bairdANCHOR

Dedicated project website available at www.bairdanchor.org or email the team at gram.bairdandanchor@nhs.scot

Baird and ANCHOR Site Progress

By Graham Davidson, Technical Supervisor



Here comes the technical bit..... We caught up with Graham Davidson our Technical Supervisor for an update on site progress, here is what he had to say...

Work on the new Baird Family Hospital and The ANCHOR Centre is progressing really

well despite the challenging winter conditions we faced throughout the last few months.

As mentioned in the previous newsletter, the new zebra crossing on Foresterhill Road is now fully operational. This allows pedestrians a safer means of crossing on what can be a busy road. The road layout at the Foresterhill Road/Loop Road junction has also changed where new 'Stop' arrangements are in place as a means of slowing vehicles down prior to the zebra crossing.

The one way road system leading towards the Emergency Department (ED) and down past The Royal Aberdeen Children's Hospital (RACH) is working well. Drivers

are now familiar with this arrangement which will be in place for the majority of the Baird construction phase.

For both sites there are vehicle wheel wash facilities in place in an effort to prevent carry over of mud onto the hospital roads and public highways during wet conditions. This is something that is continually monitored. Likewise during drier conditions the main contractor GRAHAM Construction will apply a dust management plan in an effort to minimise dust blowing onto the adjacent hospital buildings and surrounding houses.

Biometric access controlled gates are now in place and operational at both sites. These serve as a means of ensuring that only personnel who have undertaken a site induction can access the site.



Biometric gates operational on both sites

Baird

Works are progressing well with the main activities consisting of piling works for the building foundations and the concrete superstructure. Excavations to the lower ground floor level are taking place and

about 30 lorries a day are removing soil from this area. When this has been completed it will allow the piling rigs to move in and carry out the required work in that area.



Preparation work for Baird lower ground floor



The start of a wall on the Baird site showing the curve of the building

ANCHOR

Works are again progressing well; piling works have been completed and the piling rig is now off-site. A series of 'pile strength tests' have been carried out to ensure they are in compliance with the design engineer's data.



The beginning of a staircase on the ANCHOR site

The ground work contractor JKR now has full control of the ANCHOR site and is focusing on exposing the pile caps and ground beams on the lower level of the site. This will allow works to commence on the retaining wall which sits below the

Radiotherapy building at ground floor level. These works are critical to allow other trades to carry out the work that they are responsible for. The steelworker has been busy making the reinforced iron cages which are then placed on top of the piles prior to concrete pours taking place.



First concrete floor poured on the ANCHOR site

In summary, work is going well, and most importantly there has been minimal disturbance to the surrounding hospital environment.

Weekly Activity Supervisor's Plan (WASP) Meetings

Graham Davidson, Technical Supervisor and Debbie Dawson, Support Manager, Child Health Services



You may be asking yourself what is the Baird and ANCHOR WASP that I hear people talking about; well thankfully it's not of the yellow and black variety which causes havoc when it enters a room!

The Baird and ANCHOR W.A.S.P. is short for **W**ebly **A**ctivity **S**upervisor's **P**lan. This is a weekly meeting with the Project Team, GRAHAM Construction and relevant NHS Grampian stakeholders. The meetings take place on Thursday mornings.

The main purpose of these meetings is to provide attendees from the adjacent

hospital departments information on site activities that will be taking place the following week. The WASP is emailed in advance of each meeting and contains a list of activities such as piling works, concrete pouring, pile cap cropping, soil excavations and installation of ground beams, to name but a few. Any works which may create increased noise levels are discussed as are any work activities that are due to take place out with the site boundaries.

Both buildings are starting to take shape and the GRAHAM's team have started sharing photos of current site progress. The agreement by all who attend is that this is really helpful in their understanding of the technical works; as the saying goes "pictures speak louder than words".

We caught up with Debbie Dawson, Support Manager for Child Health Services. Part of Debbie's role includes responsibilities for health and safety in The Royal Aberdeen's Children's Hospital (RACH). She attends the WASP meeting every week.



"I attend as the RACH rep to allow me to keep my operational management team updated on the progress of the Baird construction. I am the RACH focal point for staff to contact regarding any issues that may be affecting them in RACH and to be the communication link with the Baird project team.

I find the WASP meetings very informative and professional. The project team are very approachable and also very responsive to any issues raised. They make you feel very welcome."

WELCOME TO THE TEAM

Drew McDonald, Equipment Commissioning Manager



We caught up with Drew McDonald who recently started with the team as the Equipment Commissioning Manager for Baird and ANCHOR. Here's what Drew had to say...

It has been three months since I joined the Baird and ANCHOR project as the Equipment Commissioning Manager. My role is to manage the equipping of the new buildings, ensuring the equipment is suitable for service, staff are trained appropriately and equipment is ready to use when Baird and ANCHOR opens to patients.

It has been a busy three months settling into this role but I have enjoyed the new challenge. I have been working with the team to review and refine the equipment lists, helping with the design of the new environments and over the next few months I will be contacting clinical teams to take part in quality assessment of some of the proposed equipment to ensure services are

happy with the equipment we plan to purchase.

I have had the pleasure of meeting many members of staff, from facilities through to clinical teams who will move their service to Baird and ANCHOR, and I will continue to meet everyone as we continue through the process. In mid to late summer we are expecting to carry out equipment audits of all areas that will move to the new buildings to begin to assess equipment that will be transferring to the new facilities. I will contact the teams involved to organise taking part in these audits. The audits will be key to ensuring we have the current equipment lists to help with our procurement, transfer and commissioning strategies.

I look forward to meeting you all, please feel free to contact me if you have any queries regarding the Baird and ANCHOR equipment.

CONSIDERATE CONSTRUCTOR

Suzanne Stevenson, Social Impact Advisor, GRAHAM Construction

Considerate Constructors Scheme



The Baird and ANCHOR site is registered under the Considerate Constructors Scheme (CCS) and, as Partner Members of the scheme, GRAHAM have committed to improve the image of the industry through registration of all their sites and to consistently perform to a high level. The scheme is recognised by the UK construction industry as a major force in improving its image through registration and monitoring of UK sites and companies.

GRAHAM aim to improve performance to the highest level across all its sites, which enables us to benchmark ourselves across the entire UK industry.

CCS provides us with an opportunity to demonstrate our approach and dedication towards this goal.

There are 5 categories within the Considerate Constructors Code, namely:

1.0 Care about Appearance

Ensuring that the external appearance of sites enhances the image of the industry.
Being organised, clean and tidy.
Enhancing the appearance of facilities, stored materials, vehicles and plant.
Raising the image of the workforce by their appearance

2.0 Respect the Community

Informing, respecting, and showing courtesy to those affected by the work.
Minimising the impact of deliveries, parking, and work on the public highway.
Contributing to and supporting the local community and economy. Working to create a positive and enduring impression and promoting the Code.

3.0 Protect the Environment.

Identifying, managing, and promoting environmental issues. Seeking sustainable solutions, and minimising waste, the carbon footprint, and resources. Minimising the impact of vibration, and air, light, and noise pollution. Protecting the ecology, the landscape, wildlife, vegetation, and water course.

4.0 Secure Everyone's Safety

Having systems that care for the safety of the public, visitors, and the workforce.
Minimising security risks to neighbours.
Having initiatives for continuous safety improvement. Embedding attitudes and behaviours that enhance safety performance.

5.0 Value their Workforce

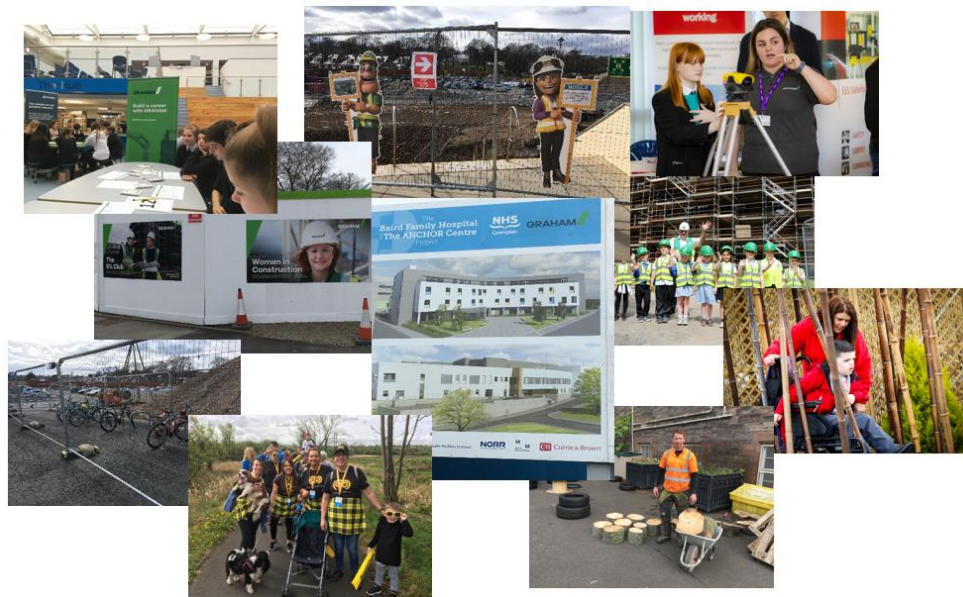
Providing a workplace where everyone is respected, treated fairly, encouraged, and supported. Identifying personal development needs and promoting training.
Caring for the health and wellbeing of the

workforce. Providing and maintaining high standards of welfare.

The above scheme relates mainly to what we are doing on site, where we aim to be as considerate to our neighbours as we can and looks at the site overall.

Community Engagement is a separate entity that the Social Impact Team will manage with the assistance of the Project Team.

Below are some typical examples of the community engagement the Social Impact Team and the Project Team engage in. Each project is different, and we will meet with NHS Grampian and local communities to discuss options and where we could potentially assist. Suggestions are welcome and can be emailed to Suzanne Stevenson Social Impact Advisor at suzanne.stevenson@graham.co.uk.



The above are some examples of the events or community assistance we have carried out in the past. For the Baird and ANCHOR project, the Social Impact Team will engage with local schools, community groups and NHS Grampian to identify areas where the local needs are. Once Covid-19 restrictions are lifted, we will be able to engage more with local schools for Career Advice and Work Experience opportunities.



@bairdanchor



@bairdANCHOR



@bairdANCHOR

Keep up to date with the latest project news on our social media channels, visit our dedicated project website available at www.bairdanchor.org or email the team at gram.bairdandanchor@nhs.scot