

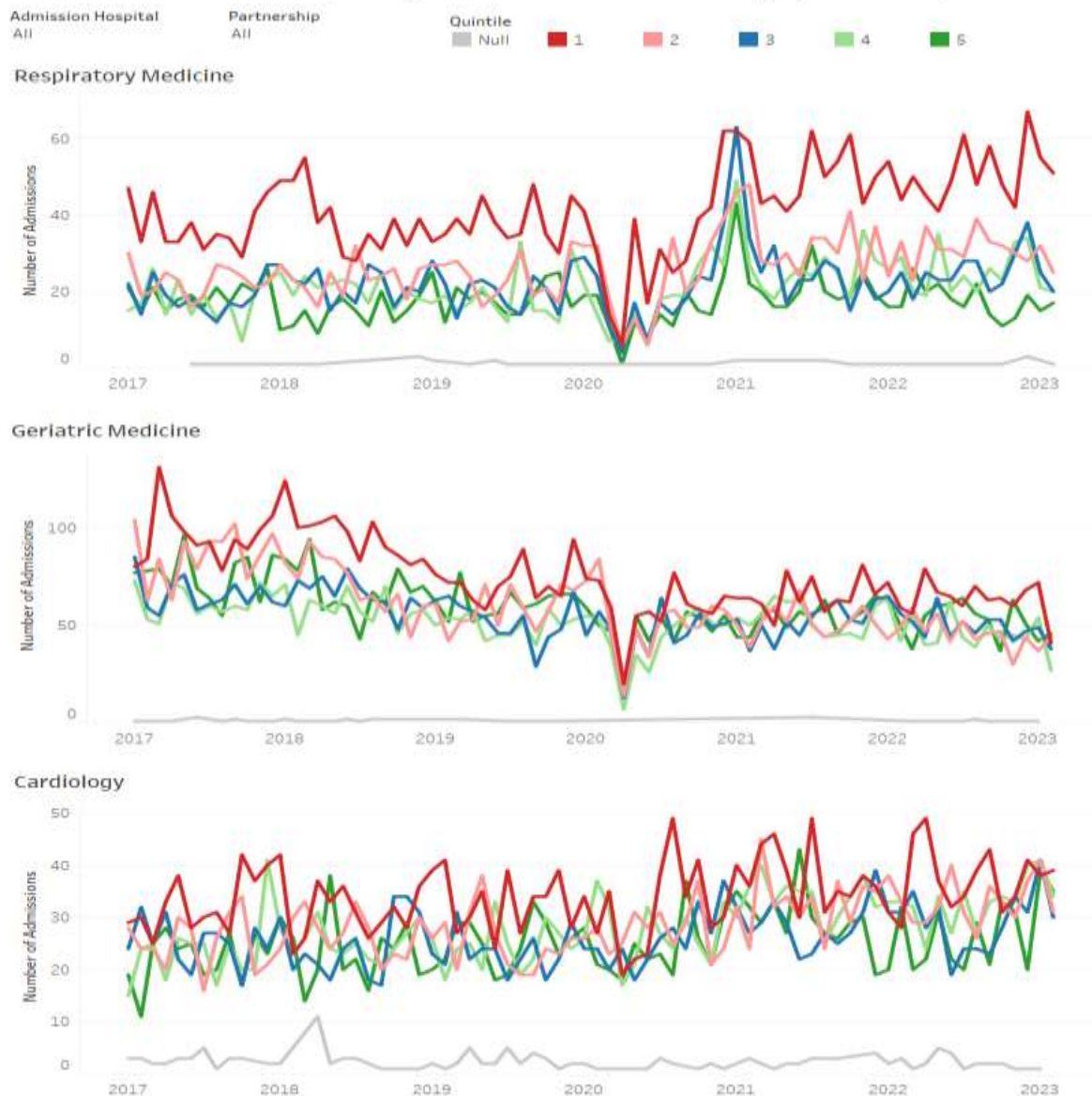
Appendix 1

Scottish Index of Multiple Deprivation (SIMD) Profile of Patients for the Areas / Specialities Where Demand Was Expected This Winter

A. Unscheduled Admissions by SIMD Quintile 2017-2023

Over the 5 year period the number of admissions for people from the most deprived SIMD quintile are consistently higher for all specialities, particularly for patients admitted for respiratory conditions.

Unscheduled Admissions to Respiratory, Geriatric Medicine and Cardiology by Local SIMD Quintile



B Differences Between least and Most Deprived Quintiles

Unscheduled Admissions to Respiratory, Geriatric Medicine and Cardiology
Difference between Most & Least Deprived Quintiles

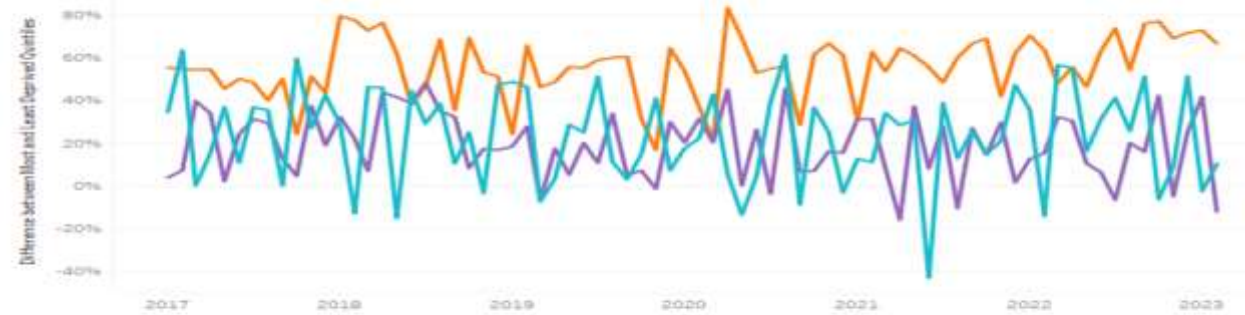
Admission Hospital
All

Partnership
All

Adm Date
To Null

Cardiology
Geriatric Medicine
Respiratory Medicine

Difference Between Most and Least Deprived Quintiles

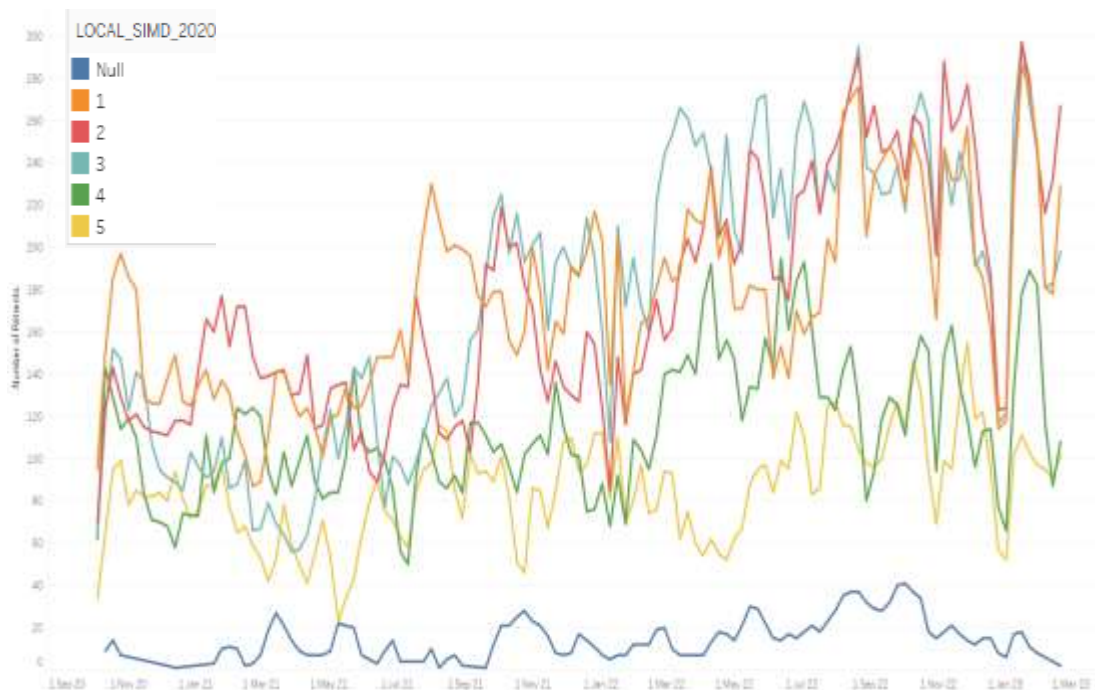
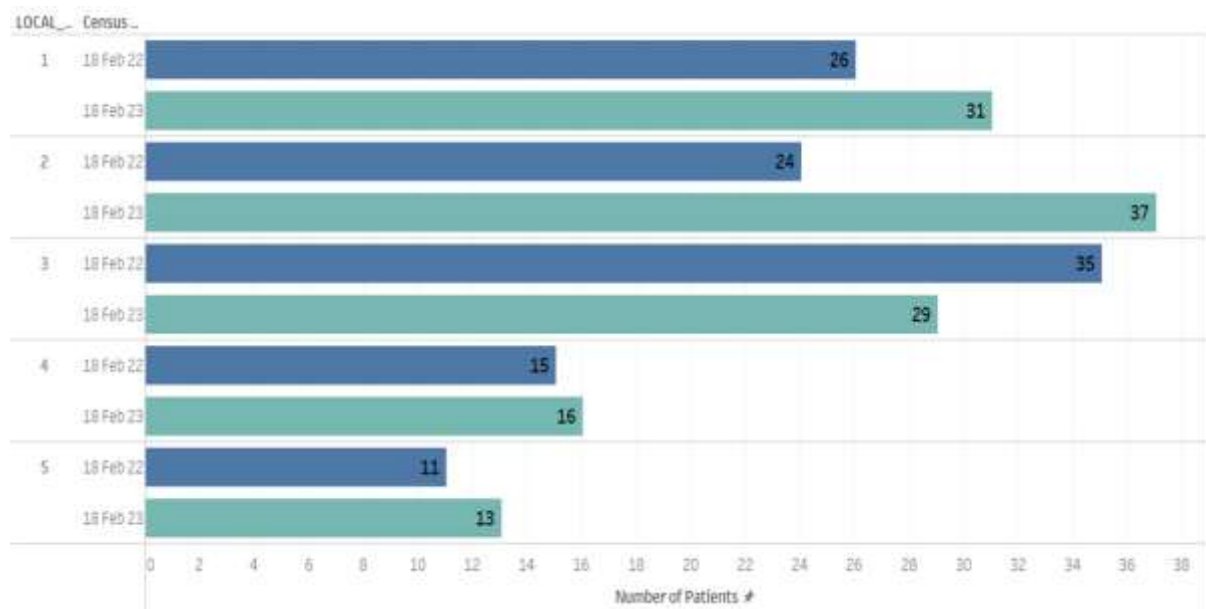


C Local SIMD Delayed Discharges

The census snapshot for mid Feb2023 compared to Feb 2022 shows an overall increase in delayed discharges. Increases are across all SIMD quintiles except SIMD 3.

Patients living in the most deprived areas (SIMD 1 and 2) make up the greatest number of delayed discharges (54% in Feb 2023), whilst those living in the least deprived areas (SIMD 4 and 5) are underrepresented (23% in Feb 2023).

LOCAL_SIMD..	18 Feb 22	18 Feb 23	18 Feb 22	18 Feb 23
1	26	31	23%	25%
2	24	37	22%	29%
3	35	29	32%	23%
4	15	16	14%	13%
5	11	13	10%	10%
Grand Total	111	126	100%	100%



D Emergency department attendances by SIMD Quintile for the years ending April 2016 and January 2023

Compared to the year ending April 2016 there has been a decrease in attendances in the most deprived and least deprived quintiles and an increase in attendances in the intermediate quintiles. It remains however that people living in the most deprived areas still had the highest number of ED attendances overall in the year ending Jan 2023.

